

RD/ER Collet Systems



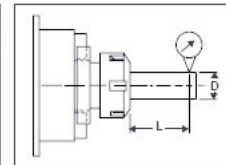
CENTAUR
PRECISION TOOLS INC.
An ISO 9001:2000 Certified Company

RD/ER COLLET SYSTEM FEATURES

- **High Accuracy.** 16 slots for rigid clamping and extra concentricity.
- **Wide Clamping Range.** For fewer changes and a low cost per set that covers a continuous range of sizes.
- **Versatility.** Interchangeable with ER and ESX type collets.
- **Ideal for Tool Extensions.** High accuracy for long-reach applications.
- **Multiple Applications.** Same collets can be used for drilling, milling, tapping and reaming.
- **Precision Manufacturing.** High grade spring steel is hardened and precision ground, with 100% quality inspection.
- **Long Life.** Exceeding that of other collet styles.
- **Factory Guarantee.** Fully backed.

RD/ER COLLET CONCENTRICITY - PER DIN 6499

METRIC				INCHES					
Clamping Range D		L	Maximum T.I.R. High		Clamping Range D		L	Maximum T.I.R. High	
Min.	Max.		Precision DIN 6499	Precision DIN 6499	Min.	Max.		Precision DIN 6499	Precision DIN 6499
1.0	1.6	6	0.015	0.008	0.039	0.063	0.236	0.0006	0.0003
1.6	3.0	10			0.063	0.118	0.394		
3.0	6.0	16			0.118	0.236	0.630		
6.0	10.0	25			0.236	0.394	0.984		
10.0	18.0	40	0.020	0.010	0.394	0.709	1.575	0.0008	0.0004
18.0	26.0	50			0.709	1.024	1.969		
26.0	34.0	60			1.024	1.339	2.362		



METHOD OF INSERTION & RELEASE FOR RD/ER COLLETS

INSERTING

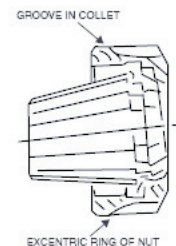
1. Insert collet into nut at angle as shown to engage extraction tongue in groove of collet.
2. Screw nut onto collet holder with collet securely in nut.
3. Insert tool to be gripped and lock nut.

IMPORTANT: Never screw nut onto collet unless collet is properly seated in nut.



RELEASING

Hold nut in vertical position and remove nut at an angle. Collet is automatically withdrawn from chuck by eccentric ring of nut when unscrewed.

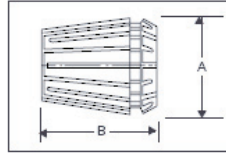


Call (866) 395-4438 Toll Free to Order or
Fax your Order to (440) 953-9209
www.kebkollets.com

RD/ER 8, 11, 12 Collet Systems

RD/ER 8 COLLET SYSTEM

Clamping Range (mm.)	Clamping Range (in.)	METRIC SIZES	
		STANDARD PRECISION	HIGH PRECISION
1.0-0.5	0.039-0.019	80-001	80-901
1.5-1.0	0.059-0.039	80-002	80-902
2.0-1.5	0.079-0.059	80-003	80-903
2.5-2.0	0.098-0.079	80-004	80-904
3.0-2.5	0.118-0.098	80-005	80-905
3.5-3.0	0.138-0.118	80-006	80-906
4.0-3.5	0.157-0.138	80-007	80-907
4.5-4.0	0.177-0.157	80-008	80-908
5.0-4.5	0.197-0.177	80-009	80-909
9 Pc. Set		80-010	80-910



RD/ER 8
A = 8.5 mm. (0.34 in.)
B = 13.5 mm. (0.53 in.)
RD/ER 11
A = 11.5 mm. (0.45 in.)
B = 18 mm. (0.71 in.)
RD/ER 12
A = 12 mm. (0.47 in.)
B = 19.5 mm. (0.77 in.)



RD/ER 8
Collapse per collet: 0.5 mm. (0.019 in.)
Capacity per set: 0.5 - 5 mm. (0.019 - 0.197 in.)
Precision per DIN 6499

RD/ER 11 COLLET SYSTEM

Clamping Range (mm.)	Clamping Range (in.)	METRIC SIZES		INCH SIZES	
		STANDARD PRECISION	HIGH PRECISION	STANDARD PRECISION	
1.0-0.5	0.039-0.019	110-001	110-901	1/16	110-501
1.5-1.0	0.059-0.039	110-002	110-902	3/32	110-502
2.0-1.5	0.079-0.059	110-003	110-903	1/8	110-503
2.5-2.0	0.098-0.079	110-004	110-904	5/32	110-504
3.0-2.5	0.118-0.098	110-005	110-905	3/16	110-505
3.5-3.0	0.138-0.118	110-006	110-906	7/32	110-506
4.0-3.5	0.157-0.138	110-007	110-907	1/4	110-507
4.5-4.0	0.177-0.157	110-008	110-908	7 Pc. Set	110-508
5.0-4.5	0.197-0.177	110-009	110-909		
5.5-5.0	0.217-0.197	110-010	110-910		
6.0-5.5	0.236-0.217	110-011	110-911		
6.5-6.0	0.256-0.236	110-012	110-912		
7.0-6.5	0.276-0.256	110-013	110-913		
13 Pc. Set		110-014	110-914		

RD/ER 11
Collapse per collet: 0.5 mm. (0.019 in.)
Capacity per set: 0.5 - 7 mm.
(0.019 - 0.276 in.)
Precision per DIN 6499
Maximum tightening torque: 20 ft./lbs.



RD/ER 12 COLLET SYSTEM

RD/ER 12
Collapse per collet: 0.5 (0.019)
Capacity per set: 0.5 - 7 mm.
(0.019 - 0.276 in.)
Precision per DIN 6499
Maximum tightening torque: 20 ft./lbs.

Clamping Range (mm.)	Clamping Range (in.)	METRIC SIZES	
		STANDARD PRECISION	HIGH PRECISION
1.0-0.5	0.039-0.019	120-001	120-901
1.5-1.0	0.059-0.039	120-002	120-902
2.0-1.5	0.079-0.059	120-003	120-903
2.5-2.0	0.098-0.079	120-004	120-904
3.0-2.5	0.118-0.098	120-005	120-905
3.5-3.0	0.138-0.118	120-006	120-906
4.0-3.5	0.157-0.138	120-007	120-907
4.5-4.0	0.177-0.157	120-008	120-908
5.0-4.5	0.197-0.177	120-009	120-909
5.5-5.0	0.217-0.197	120-010	120-910
6.0-5.5	0.236-0.217	120-011	120-911
6.5-6.0	0.256-0.236	120-012	120-912
7.0-6.5	0.276-0.256	120-013	120-913
13Pc. Set		120-014	120-914



NOTE: High precision also available in inch sizes.

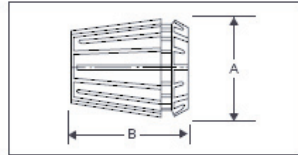
RTS 11 RIGID TAPPING COLLETS

ANSI Tap Size	Part No.
0-6	111-141
8	111-168
10	111-194
12	111-220
1/4	111-255

Call (866) 395-4438 Toll Free to Order or
Fax your Order to (440) 953-9209
www.kebkollets.com

RD/ER I 6 Collet Systems

RD/ER 16 COLLET SYSTEM



A = 17 mm. (0.67 in.)
B = 27 mm. (1.06 in.)

Collapse per collet: 0.5/1 mm. (0.019/0.039 in.)
Capacity per set: 0.5 - 10 mm. (0.019 - 0.394 in.)
Precision per DIN 6499
Maximum tightening torque: 40 ft./lbs.

INTERNAL COOLANT COLLETS



Sealed for coolant-through applications, with pressure resistance tested to 1000 p.s.i.

Sealed collets are exact size collets and have no collapse range.

ND COLLETS



Nominal size collets manufactured per DIN 6499 Form A are available in inch and metric sizes by special order, offering maximum 0.0003 in. TIR.

TAPPING COLLETS

RTS Rigid Tapping Collets with Square Drive

For synchronous tapping operations using any RD/ER collet chuck. Collet bore is exact tool diameter, with square drive, for accuracy and rigidity. Available sealed for coolant-through applications, as well as in DIN and JIS standard metric sizes.



RDT Quick-Change Tapping Collets with Axial Compensation

For use with any RD/ER collet chuck, these tapping collets help prevent tap breakage on machines requiring axial compensation. Friction-free ball-bearing drive. Metric sizes available upon request.



Call (866) 395-4438 Toll Free to Order or
Fax your Order to (440) 953-9209
www.kebkollets.com

RD/ER 16 Collet System

RD/ER 16 COLLETS

Clamping Range (mm.) (in.)		METRIC SIZES			INCH SIZES		INTERNAL COOLANT COLLETS			
		STANDARD PRECISION	HIGH PRECISION	0.5 INCREMENTS	STANDARD PRECISION		METRIC	INCH		
Part No.	Part No.	Part No.		Dia. (in.)	Part No.	Dia. (mm.)	Part No.	Dia. (in.)	Part No.	
1-0.5	0.039-0.019	160-001	160-901		1/16	160-501	3	160IK03	1/8	160IK501
1.5-1	0.059-0.039			160-101	3/32	160-502	4	160IK04	5/32	160IK502
2-1	0.079-0.039	160-002	160-902		1/8	160-503	5	160IK05	3/16	160IK503
2.5-1.5	0.098-0.059			160-102	5/32	160-504	6	160IK06	7/32	160IK504
3-2	0.118-0.079	160-003	160-903		3/16	160-505	7	160IK07	1/4	160IK505
3.5-2.5	0.138-0.098			160-103	7/32	160-506	8	160IK08	9/32	160IK506
4-3	0.157-0.118	160-004	160-904		1/4	160-507	9	160IK09	5/16	160IK507
4.5-3.5	0.177-0.138			160-104	9/32	160-508	10	160IK10	11/32	160IK508
5-4	0.197-0.157	160-005	160-905		5/16	160-509			3/8	160IK509
5.5-4.5	0.217-0.177			160-105	11/32	160-510				
6-5	0.236-0.197	160-006	160-906		3/8	160-511				
6.5-5.5	0.256-0.217			160-106	13/32	160-512				
7-6	0.276-0.236	160-007	160-907		12-Pc. Set	160-513				
7.5-6.5	0.296-0.256			160-107						
8-7	0.315-0.276	160-008	160-908							
8.5-7.5	0.335-0.296			160-108						
9-8	0.354-0.315	160-009	160-909							
9.5-8.5	0.374-0.335			160-109						
10-9	0.394-0.354	160-010	160-910							
10 Pc. Set		160-011								

NOTE: External flow coolant collets available.

NOTE: High precision also available in inch sizes.

RD/ER 16 TAPPING COLLETS

ANSI Tap Size	RTS RIGID TAPPING COLLETS		RTS INTERNAL COOLANT RIGID TAPPING COLLETS		RDT AXIAL COMPENSATION TAPPING COLLETS	
	Part No.	Part No.	Part No.	Part No.	Part No.	Part No.
0-6	161-141	161-141S			160-141	
8	161-168	161-168S			160-168	
10	161-194	161-194S			160-194	
12	161-220	161-220S				
1/4	161-255	161-255S				
5/16	161-318	161-318S				

Call (866) 395-4438 Toll Free to Order or
Fax your Order to (440) 953-9209
www.kebkollets.com

RD/ER 20, 25, 32, 40, 50 Collet Systems

RD/ER 20 COLLETS

Clamping Range (mm.) (in.)		METRIC SIZES			INCH SIZES		INTERNAL COOLANT COLLETS			
		STANDARD PRECISION	HIGH PRECISION	0.5 mm. INCREMENTS	STANDARD PRECISION		METRIC	INCH		
Part No.	Part No.	Part No.		Dia. (in.)	Part No.	Dia. (mm.)	Part No.	Dia. (in.)	Part No.	
1-0.5	0.039-0.019			200-100	1/16	200-501	3	200K03	1/8	200K501
1.5-1	0.059-0.039			200-101	3/32	200-502	4	200K04	5/32	200K502
2-1	0.079-0.039	200-001	200-901	200-102	1/8	200-503	5	200K05	3/16	200K503
2.5-1.5	0.098-0.059			200-103	5/32	200-504	6	200K06	7/32	200K504
3-2	0.118-0.079	200-002	200-902	200-104	3/16	200-505	7	200K07	1/4	200K505
3.5-2.5	0.138-0.098			200-105	7/32	200-506	8	200K08	9/32	200K506
4-3	0.157-0.118	200-003	200-903	200-106	1/4	200-507	9	200K09	5/16	200K507
4.5-3.5	0.177-0.138			200-107	9/32	200-508	10	200K10	11/32	200K508
5-4	0.197-0.157	200-004	200-904	200-108	5/16	200-509	11	200K11	3/8	200K509
5.5-4.5	0.217-0.177			200-109	11/32	200-510	12	200K12	13/32	200K510
6-5	0.236-0.197	200-005	200-905	200-110	3/8	200-511	13	200K13	7/16	200K511
6.5-5.5	0.256-0.217			200-111	13/32	200-512			15/32	200K512
7-6	0.276-0.236	200-006	200-906	200-112	7/16	200-513			1/2	200K513
7.5-6.5	0.296-0.256				15/32	200-514				
8-7	0.315-0.276	200-007	200-907		1/2	200-515				
8.5-7.5	0.335-0.296				15 Pc. Set	200-516				
9-8	0.354-0.315	200-008	200-908							
9.5-8.5	0.374-0.335									
10-9	0.394-0.354	200-009	200-909							
10.5-9.5	0.414-0.374									
11-10	0.433-0.394	200-010	200-910							
11.5-10.5	0.453-0.414									
12-11	0.472-0.433	200-011	200-911							
12.5-11.5	0.493-0.453									
13-12	0.512-0.472	200-012	200-912							
12 Pc. Set		200-013	200-913							

NOTE: External flow coolant collets available.

NOTE: High precision also available in inch sizes.

RD/ER 20 TAPPING COLLETS

ANSI Tap Size	RTS RIGID TAPPING COLLETS		RTS INTERNAL COOLANT RIGID TAPPING COLLETS		RDT AXIAL COMPENSATION TAPPING COLLETS	
	Part No.	Part No.	Part No.	Part No.	Part No.	Part No.
0-6	201-141	201-141S	201-141T			
8	201-168	201-168S	200-168			
10	201-194	201-194S	200-194			
12	201-220	201-220S	200-220			
1/4	201-255	201-255S	200-255			
5/16	201-318	201-318S				
3/8	201-381	201-381S				
7/16	201-323	201-323S				
1/2	201-367	201-367S				

RD/ER 25, 32, 40 & 50

*Please note that the specifications for RD/ER 25, 32, 40 & 50 collets are available upon request.

Call (866) 395-4438 Toll Free to Order or
Fax your Order to (440) 953-9209
www.kebkollets.com

ACCESSORIES

Master Tooling Sets

MASTER TOOLING SETS

Part No.	Collet Type	No. Of Collets	Range (mm.) (in.)		Chuck	Nut	Wrench
MSO 08080	RD 8	9	0.5 - 5	0.019 - 0.177	Cyl. 8 X 80	RD 8 M	E 8 M
MSO 11154	RD 11	13	0.5 - 7	0.019 - 0.276	Cyl. 5/8 X 154	RD 11 M	E 11 M
MSO 11254	RD 11	13	0.5 - 7	0.019 - 0.276	Cyl. 1/2 X 154	RD 11 M	E 11 M
MSO 16140	RD 16	10	0.5 - 10	0.019 - 0.394	Cyl. 1 X 140	RD 16 H	GS 25
MSO 16134	RD 16	10	0.5 - 10	0.019 - 0.394	Cyl. 3/4 X 134	RD 16 M	E 16 M
MSO 160C40	RD 16	10	0.5 - 10	0.019 - 0.394	CAT 40	RD 16 H	GS 25
MSO 160B40	RD 16	10	0.5 - 10	0.019 - 0.394	BT 40	RD 16 H	GS 25
MSO 20134	RD 20	12	1 - 13	0.039 - 0.512	Cyl. 1 X 134	RD 20 M	E 20 M
MSO 200C40	RD 20	12	1 - 13	0.039 - 0.512	CAT 40	RD 20 H	GS 30
MSO 25100	RD 25	15	1 - 16	0.039 - 0.630	Cyl. 1 X 100	RD 25 E	E 25
MSO 250C40	RD 25	15	1 - 16	0.039 - 0.630	CAT 40	RD 25 E	E 25
MSO 32050	RD 32	18	2 - 20	0.079 - 0.787	Cyl. 1 X 50	RD 32 E	E 32
MSO 32060	RD 32	18	2 - 20	0.079 - 0.787	Cyl. 1-1/4 X 60	RD 32 E	E 32
MSO 32008	RD 32	18	2 - 20	0.079 - 0.787	R8	RD 32 E	E 32
MSO 320C40	RD 32	18	2 - 20	0.079 - 0.787	CAT 40	RD 32 E	E 32
MSO 320C50	RD 32	18	2 - 20	0.079 - 0.787	CAT 50	RD 32 E	E 32
MSO 320B40	RD 32	18	2 - 20	0.079 - 0.787	BT 40	RD 32 E	E 32
MSO 320B50	RD 32	18	2 - 20	0.079 - 0.787	BT 50	RD 32 E	E 32
MSO 40050	RD 40	23	3 - 26	0.118 - 1.024	Cyl. 1 X 50	RD 40 E	E 40
MSO 40008	RD 40	23	3 - 26	0.118 - 1.024	R8	RD 40 E	E 40
MSO 400C40	RD 40	23	3 - 26	0.118 - 1.024	CAT 40	RD 40 E	E 40
MSO 400C50	RD 40	23	3 - 26	0.118 - 1.024	CAT 50	RD 40 E	E 40
MSO 400B40	RD 40	23	3 - 26	0.118 - 1.024	BT 40	RD 40 E	E 40
MSO 400B50	RD 40	23	3 - 26	0.118 - 1.024	BT 50	RD 40 E	E 40



All listed items included in fitted wooden box.

WOODEN TOOL TRAYS

Part No.	Description	Collet Capacity
TRYRD8	RD 8 Metric	10
TRYRD11	RD 11 Metric	14
TRYRD16	RD 16 Inch	10
TRYRD16I	RD 16 Inch	12
TRYRD20	RD 20 Metric	12
TRYRD20I	RD 20 Inch	16
TRYRD25	RD 25 Metric	15
TRYRD25I	RD 25 Inch	19
TRYRD32	RD 32 Metric	18
TRYRD32I	RD 32 Inch	22
TRYRD40	RD 40 Metric	23



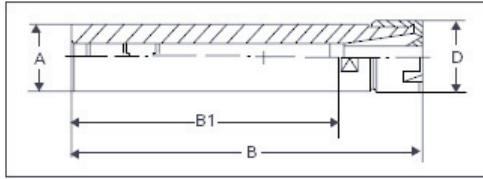
WOODEN TOOL BOXES

Part No.	Description	Collet Capacity
WBXRD8	RD 8 Box	9
WBXRD11	RD 11 Box	13
WBXRD16	RD 16 Box	10
WBXRD20	RD 20 Box	12
WBXRD25	RD 25 Box	15
WBXRD32	RD 32 Box	18
WBXRD40	RD 40 Box	23



Call (866) 395-4438 Toll Free to Order or
Fax your Order to (440) 953-9209
www.kebkollets.com

Straight-Shank RD/ER Collet Chucks (Extension Style)



	Part No.	A		B		B1		D		Nut Style/ Part No.	Wrench
		(mm.)	(in.)	(mm.)	(in.)	(mm.)	(in.)	(mm.)	(in.)		
RD 8	80856	8	0.31	70	2.76	56	2.20	12	0.47	M-30008	22008
	80880	8	0.31	100	3.94	80	3.15	12	0.47	M-30008	22008
	1008856	10	0.39	70	2.76	56	2.20	12	0.47	M-30008	22008
	10080	10	0.39	100	3.94	80	3.15	12	0.47	M-30008	22008
	12080	12	0.47	95	3.74	80	3.15	12	0.47	M-30008	22008
	50080			1/2	95	3.74	80	3.15	12	0.47	M-30008
RD 11	201180	20	0.79	100	3.94	80	3.15	16	0.63	M-30011	22011
	201115	20	0.79	145	5.71	115	4.53	19	0.75	H-30111	22317
	221100*	22	0.88	130	5.12	100	3.94	19	0.75	H-30111	22317
	121154		1/2	168	6.61	154	6.06	16	0.63	M-30011	22011
	121180		1/2	100	3.94	80	3.15	16	0.63	M-30011	22011
	121181		1/2	100	3.94	80	3.15	19	0.75	H-30111	22317
	5811140		5/8	155	6.10	140	5.51	19	0.75	H-30111	22317
	5811200		5/8	64	2.50	51	2.00	16	0.63	M-30011	22011
	5811300		5/8	90	3.51	76	3.00	16	0.63	M-30011	22011
	581154		5/8	168	6.61	154	6.06	16	0.63	M-30011	22011
	581155		5/8	168	6.61	154	6.06	19	0.75	H-30111	22317
	341195†		3/4	100	3.94	85	3.35	16	0.63	M-30011	22011
	34200011†		3/4	51	2.00	25	1.00	16	0.63	M-30011	22011
	34285011†		3/4	72	2.85	49	1.92	16	0.63	M-30011	22011
	344011		3/4	102	4.00	89	3.50	16	0.63	M-30011	22011
	1001180		1	93	3.66	80	3.15	16	0.63	M-30011	22011
RD 12	141225	14	0.55	38	1.50	25	0.98	19	0.75	H-30112	22317
	201280	20	0.79	93	3.66	80	3.15	19	0.75	H-30112	22317
	10012140		1	153	6.02	140	5.51	19	0.75	H-30112	22317
RD 16	441630	14	0.55	55	2.17	30	1.18	28	1.10	H-30116	22325
	441660	14	0.55	85	3.35	60	2.36	28	1.10	H-30116	22325
	201630	20	0.79	55	2.17	30	1.18	28	1.10	H-30116	22325
	201650	20	0.79	79	3.10	50	1.97	28	1.10	H-30116	22325
	201600	20	0.79	125	4.92	100	3.94	28	1.10	H-30116	22325
	201601	20	0.79	135	5.31	100	3.94	22	0.87	M-30016	22016
	221680*	22	0.88	103	4.06	80	3.15	28	1.10	H-30116	22325
	221634*	22	0.88	160	6.30	134	5.28	28	1.10	H-30116	22325
	581681		5/8	105	4.13	80	3.15	22	0.87	M-30016	22016
	581614		5/8	157	6.18	140	5.51	28	1.10	H-30116	22325
	581654		5/8	179	7.04	154	6.06	22	0.87	M-30016	22016
	341670†		3/4	116	4.60	70	2.76	22	0.87	M-30016	22016
	341680		3/4	103	4.05	80	3.15	28	1.10	H-30116	22325
	341681		3/4	115	4.52	80	3.15	22	0.87	M-30016	22016
	341690†		3/4	136	5.35	90	3.54	22	0.87	M-30016	22016
	341610		3/4	135	5.31	100	3.94	22	0.87	M-30016	22016
341634		3/4	160	6.40	134	5.28	22	0.87	M-30016	22016	
341654		3/4	189	7.44	154	6.06	22	0.87	M-30016	22016	
101600		1	134	5.28	100	3.94	28	1.10	H-30116	22325	
101614		1	157	6.18	140	5.51	28	1.10	H-30116	22325	
RD 20	202000	20	0.79	142	5.60	100	3.94	28	1.10	M-30020	22020
	202100	20	0.79	142	5.60	100	3.94	34	1.34	H-30120	22330
	2220100*	22	0.88	140	5.52	100	3.94	34	1.34	H-30120	22330
	2220120*	22	0.88	160	6.30	120	4.72	34	1.34	H-30120	22330
	222080*	22	0.88	120	4.72	80	3.15	34	1.34	H-30120	22330
	3420100		3/4	142	5.60	100	3.94	28	1.10	M-30020	22020
	1002034		1	160	6.30	134	5.28	28	1.10	M-30020	22020
	1002034H		1	160	6.30	134	5.28	34	1.34	H-30120	22330
RD 25	252500	25	0.98	135	5.31	100	3.94	42	1.65	E-30125	22125
	1002550		1	85	3.35	50	1.97	42	1.65	E-30125	22125
	1002500		1	135	5.31	100	3.94	42	1.65	E-30125	22125
	1002550M		1	85	3.35	50	1.97	35	1.38	M-30025	22025
	1002500M		1	135	5.31	100	3.94	35	1.38	M-30025	22025

*Holders for Star machines. NOTE: Wrenches are sold separately.

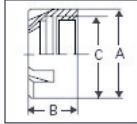
†Double-End Style

Call (866) 395-4438 Toll Free to Order or
 Fax your Order to (440) 953-9209
www.kebkollets.com

Clamping Nuts & Wrenches

CLAMPING NUTS & WRENCHES

MINI NUTS



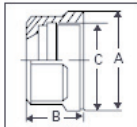
Part No.	Type	A		B		C
		(mm.)	(in.)	(mm.)	(in.)	
30008	RD 8 M	12	0.47	10.8	0.42	M10 X 0.75
30011	RD 11 M	16	0.63	11.3	0.44	M13 X 0.75
30016	RD 16 M	22	0.87	17	0.67	M19 X 1
30020	RD 20 M	28	1.10	19	0.75	M24 X 1
30025	RD 25 M	35	1.38	20	0.79	M30 X 1

MINI WRENCH



Part No.	Type
22008	E 8 M
22011	E 11 M
22016	E 16 M
22020	E 20 M
22025	E 25 M

HEX NUTS



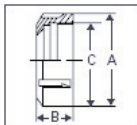
Part No.	Type	A		B		C
		(mm.)	(in.)	(mm.)	(in.)	
30111	UM/RD 11	19	0.75	11.3	0.44	M14 X 0.75
30112	UM/RD 12	19	0.75	12.5	0.49	M14 X 0.75
30116	UM/RD 16	28	1.10	17	0.67	M22 X 1.5
30120	UM/RD 20	34	1.34	19	0.75	M25 X 1.5

HEX WRENCH



Part No.	Type
22317	GS 17
22317	GS 17
22325	GS 25
22330	GS 30

"E" NUT



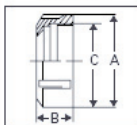
Part No.	Type	A		B		C
		(mm.)	(in.)	(mm.)	(in.)	
30126	UX/RD 16	32	1.26	17.5	0.69	M22 X 1.5
30127	UX/RD 20	35	1.38	18.5	0.73	M25 X 1.5
30125	UM/RD 25	42	1.65	20	0.79	M32 X 1.5
30132	UM/RD 32	50	1.97	22	0.87	M40 X 1.5
30140	UM/RD 40	63	2.48	25	0.98	M50 X 1.5
30150	UM/RD 50	78	2.07	35	1.38	M64 X 2

"E" WRENCH



Part No.	Type
22116	E 16
22120	E 20
22125	E 25
22132	E 32
22140	E 40
22150	E 50

BALL-BEARING NUTS



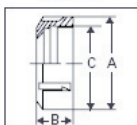
Part No.	Type	A		B		C
		(mm.)	(in.)	(mm.)	(in.)	
30216	KM/RD 16	29	1.14	17.5	0.69	M22 X 1.5
30220	KM/RD 20	34	1.34	18.5	0.73	M25 X 1.5
30225	KM/RD 25	42	1.65	20	0.79	M32 X 1.5
30232	KM/RD 32	50	1.97	22	0.87	M40 X 1.5
30240	KM/RD 40	63	2.48	25	0.98	M50 X 1.5
30250	KM/RD 50	78	3.07	35	1.38	M64 X 2

"E" WRENCH



Part No.	Type
22125	E 25
22132	E 32
22140	E 40
22150	E 50

HIGH-SPEED NUTS



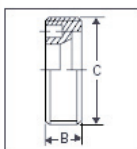
Part No.	Type	A		B		C
		(mm.)	(in.)	(mm.)	(in.)	
30716	HS/RD 16	30	1.18	17	0.67	M22 X 1.5
30720	HS/RD 20	34	1.34	19	0.75	M25 X 1.5
30725	HS/RD 25	42	1.65	20	0.79	M32 X 1.5
30732	HS/RD 32	50	1.97	22.3	0.87	M40 X 1.5
30740	HS/RD 40	63	2.48	25.3	1.00	M50 X 1.5

"E" WRENCH



Part No.	Type
22125	E 25
22132	E 32
22140	E 40

INTERNAL FIT NUTS



Part No.	Type	A		B		C
		(mm.)	(in.)	(mm.)	(in.)	
0035211	RD 11 A	—	—	8	0.32	M18 X 1
0035216	RD 16 A	—	—	8	0.32	M24 X 1
0035220	RD 20 A	—	—	11	0.43	M28 X 1.5
0035225	RD 25 A	—	—	12.5	0.49	M32 X 1.5
0035232	RD 32 A	—	—	14	0.55	M40 X 1.5

IF WRENCH



Part No.	Type
35443	RD 11 A
35443	RD 16 A
35443	RD 20 A
35444	RD 25 A
35444	RD 32 A

Call (866) 395-4438 Toll Free to Order or
Fax your Order to (440) 953-9209
www.kebkollets.com

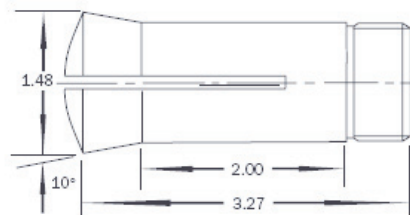


CENTAUR
PRECISION TOOLS INC.
An ISO 9001:2000 Certified Company

5C ROUND COLLETS — INCH SIZES



- Hardened and ground
- External thread = 1.234 x 20 RH
- Internal thread = 1.047 x 24 RH



Part No.	Size	Part No.	Size	Part No.	Size	Part No.	Size
5CR04	1/16"	5CR21	21/64"	5CR37	37/64"	5CR53	53/64"
5CR05	5/64"	5CR22	11/32"	5CR38	19/32"	5CR54	27/32"
5CR06	3/32"	5CR23	23/64"	5CR39	39/64"	5CR55	55/64"
5CR07	7/64"	5CR24	3/8"	5CR40	5/8"	5CR56	7/8"
5CR08	1/8"	5CR25	25/64"	5CR41	41/64"	5CR57	57/64"
5CR09	9/64"	5CR26	13/32"	5CR42	21/32"	5CR58	29/32"
5CR10	5/32"	5CR27	27/64"	5CR43	43/64"	5CR59	59/64"
5CR11	11/64"	5CR28	7/16"	5CR44	11/16"	5CR60	15/16"
5CR12	3/16"	5CR29	29/64"	5CR45	45/64"	5CR61	61/64"
5CR13	13/64"	5CR30	15/32"	5CR46	23/32"	5CR62	31/32"
5CR14	7/32"	5CR31	31/64"	5CR47	47/64"	5CR63	63/64"
5CR15	15/64"	5CR32	1/2"	5CR48	3/4"	5CR64	1"
5CR16	1/4"	5CR33	33/64"	5CR49	49/64"	5CR65	1-1/64"
5CR17	17/64"	5CR34	17/32"	5CR50	25/32"	5CR66	1-1/32"
5CR18	9/32"	5CR35	35/64"	5CR51	51/64"	5CR67	1-3/64"
5CR19	19/64"	5CR36	9/16"	5CR52	13/16"	5CR68	1-1/16"
5CR20	5/16"						

5C COLLET SETS — INCH SIZES

Part No.	Description	Part No.	Description
5CRS07	7 Pc. Set — 1/4 - 1" in 1/8" Incr.	5CRS33	33 Pc. Set — 1/16 - 1-1/16" in 1/32" Incr.
5CRS15	15 Pc. Set — 1/8 - 1" in 1/16" Incr.	5CRS65	65 Pc. Set — 1/16 - 1-1/16" in 1/64" Incr.
5CRS17	17 Pc. Set — 1/16 - 1-1/16" in 1/16" Incr.		

Call (866) 395-4438 Toll Free to Order or
Fax your Order to (440) 953-9209
www.kebkollets.com

ACCESSORIES

5C Collets



5C ROUND COLLETS — METRIC SIZES

Part No.	Size	Part No.	Size	Part No.	Size	Part No.	Size
5CRM03	3mm	5CRM09	9mm	5CRM15	15mm	5CRM21	21mm
5CRM04	4mm	5CRM10	10mm	5CRM16	16mm	5CRM22	22mm
5CRM05	5mm	5CRM11	11mm	5CRM17	17mm	5CRM23	23mm
5CRM06	6mm	5CRM12	12mm	5CRM18	18mm	5CRM24	24mm
5CRM07	7mm	5CRM13	13mm	5CRM19	19mm	5CRM25	25mm
5CRM08	8mm	5CRM14	14mm	5CRM20	20mm	5CRM26	26mm

5C HEX COLLETS

Part No.	Size	Part No.	Size	Part No.	Size	Part No.	Size
5CH08	1/8"	5CH24	3/8"	5CH36	9/16"	5CH48	3/4"
5CH12	3/16"	5CH28	7/16"	5CH40	5/8"	5CH52	13/16"
5CH16	1/4"	5CH32	1/2"	5CH44	11/16"	5CH56	7/8"
5CH20	5/16"						

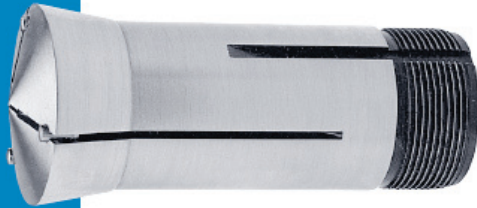
5C SQUARE COLLETS

Part No.	Size	Part No.	Size	Part No.	Size	Part No.	Size
5CS08	1/8"	5CS20	5/16"	5CS32	1/2"	5CS40	5/8"
5CS12	3/16"	5CS24	3/8"	5CS36	9/16"	5CS44	11/16"
5CS16	1/4"	5CS28	7/16"				

Call (866) 395-4438 Toll Free to Order or
 Fax your Order to (440) 953-9209
www.kebkollets.com

5C Collets & Accessories

5C EMERGENCY COLLET



Part No.	Description
5CEM	5C Emergency Collet With Pins

5C STEP COLLET



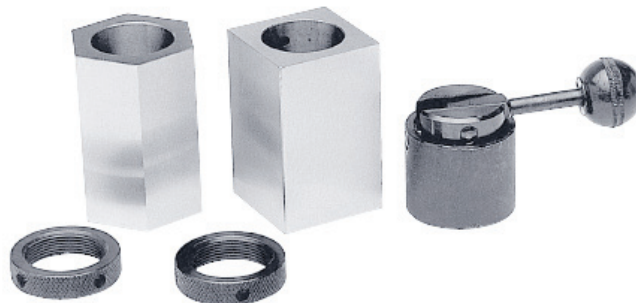
Part No.	Description
5CST2	2" 5C Step Collet
5CST3	3" 5C Step Collet
5CST4	4" 5C Step Collet
5CST5	5" 5C Step Collet
5CST6	6" 5C Step Collet

5C COLLET ADJUSTABLE BACKSTOP



Part No.	Description
5CABS	Adjustable Backstop For 5C Collets

5C COLLET HOLDER SET



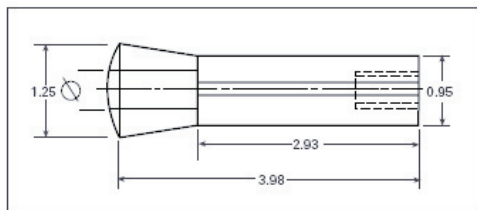
Part No.	Description
5CCHSET	5C Collet Holder Set With Hex, Square and Lever
5CHCH	Hex 5C Collet Holder
5CSCH	Square 5C Collet Holder
5CQAL	Quick-Action Lever For 5C Collet Holders

Call (866) 395-4438 Toll Free to Order or
Fax your Order to (440) 953-9209
www.kebkollets.com

CENTAUR
PRECISION TOOLS INC.
An ISO 9001:2000 Certified Company



R8 COLLETS — INCH SIZES



Part No.	Size	Part No.	Size	Part No.	Size	Part No.	Size
R802	1/16"	R808	1/4"	R814	7/16"	R820	5/8"
R803	3/32"	R809	9/32"	R815	15/32"	R821	21/32"
R804	1/8"	R810	5/16"	R816	1/2"	R822	11/16"
R805	5/32"	R811	11/32"	R817	17/32"	R823	23/32"
R806	3/16"	R812	3/8"	R818	9/16"	R824	3/4"
R807	7/32"	R813	13/32"	R819	19/32"	R828	7/8"

R8 COLLET SETS — INCH SIZES

Part No.	Description	Part No.	Description
R8S06	6 Pc. Set — 1/8 - 3/4" in 1/8" Incr.	R8S23	23 Pc. Set — 1/16 - 3/4" in 1/32" Incr.
R8S11	11 Pc. Set — 1/8 - 3/4" in 1/16" Incr.		

R8 COLLETS — METRIC SIZES

Part No.	Size	Part No.	Size	Part No.	Size	Part No.	Size
R8M03	3mm	R8M08	8mm	R8M13	13mm	R8M18	18mm
R8M04	4mm	R8M09	9mm	R8M14	14mm	R8M19	19mm
R8M05	5mm	R8M10	10mm	R8M15	15mm	R8M20	20mm
R8M06	6mm	R8M11	11mm	R8M16	16mm	R8M21	21mm
R8M07	7mm	R8M12	12mm	R8M17	17mm	R8M22	22mm

Call (866) 395-4438 Toll Free to Order or
Fax your Order to (440) 953-9209
www.kebkollets.com